



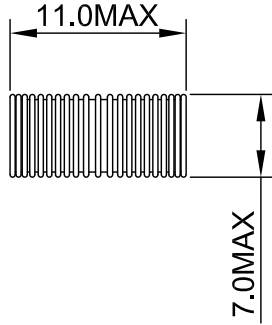
# SPECIFICATION

|      |                        |          |      |
|------|------------------------|----------|------|
| ITEM | NORMAL MODE CHOKE COIL | Part No. | MP10 |
|      |                        | Rev.     |      |

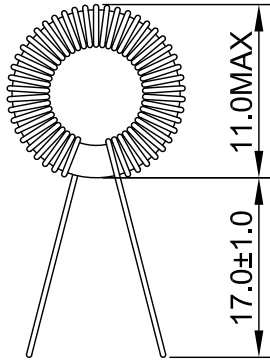
## 1. DIMENSION (UNIT : mm)

### Image

TOP



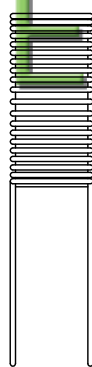
FRONT



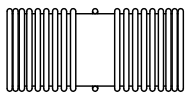
전자부품전문 하남전자

# HANAMELEC.NET

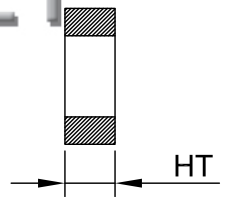
SIDE



BOTTOM



OD : 10.8  
 ID : 4.6  
 HT : 4.6



## Ordering Number

**MP10-220M(CM100125)**

- Core Material : CM100125
- Tolerance : K = ± 10%  
M = ± 20%
- Inductance : 220 = 22uH
- Core Size : 10 = 10Φ
- Core Shape : MP = MPP

|                  |  |
|------------------|--|
| * CENTER AIR GAP |  |
| * REMOVED PIN    |  |
| * CUTTING PIN    |  |

|      |          |  |                 |               |          |
|------|----------|--|-----------------|---------------|----------|
| DATE | 09.10.15 | <b>HNE</b> HANAM ELECTRONICS CO., LTD. | <i>YB.jeong</i> | <i>KD.KIM</i> |          |
| PAGE |          |  | DESIGNED        | CHECKED       | APPROVED |